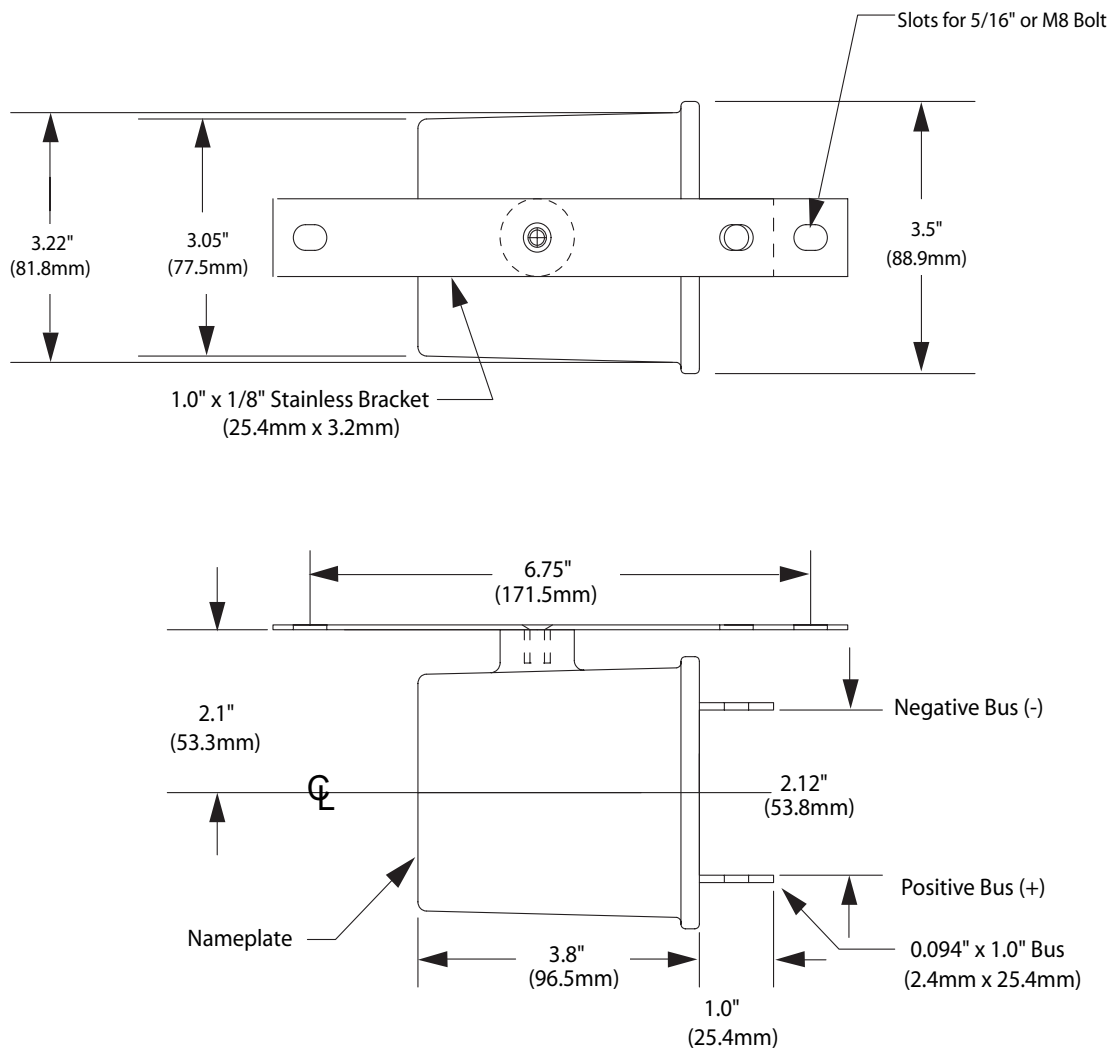


Figure 1 OVP2 Outline Drawing



Notes:

1. Only models with an asymmetrical blocking voltage will have polarity marks shown.
2. Bracket furnished with all models. Bracket may need to be removed when certain mounting options are selected.

Figure 2 Banding the OVP2 to a Test Station or Pipe Wall

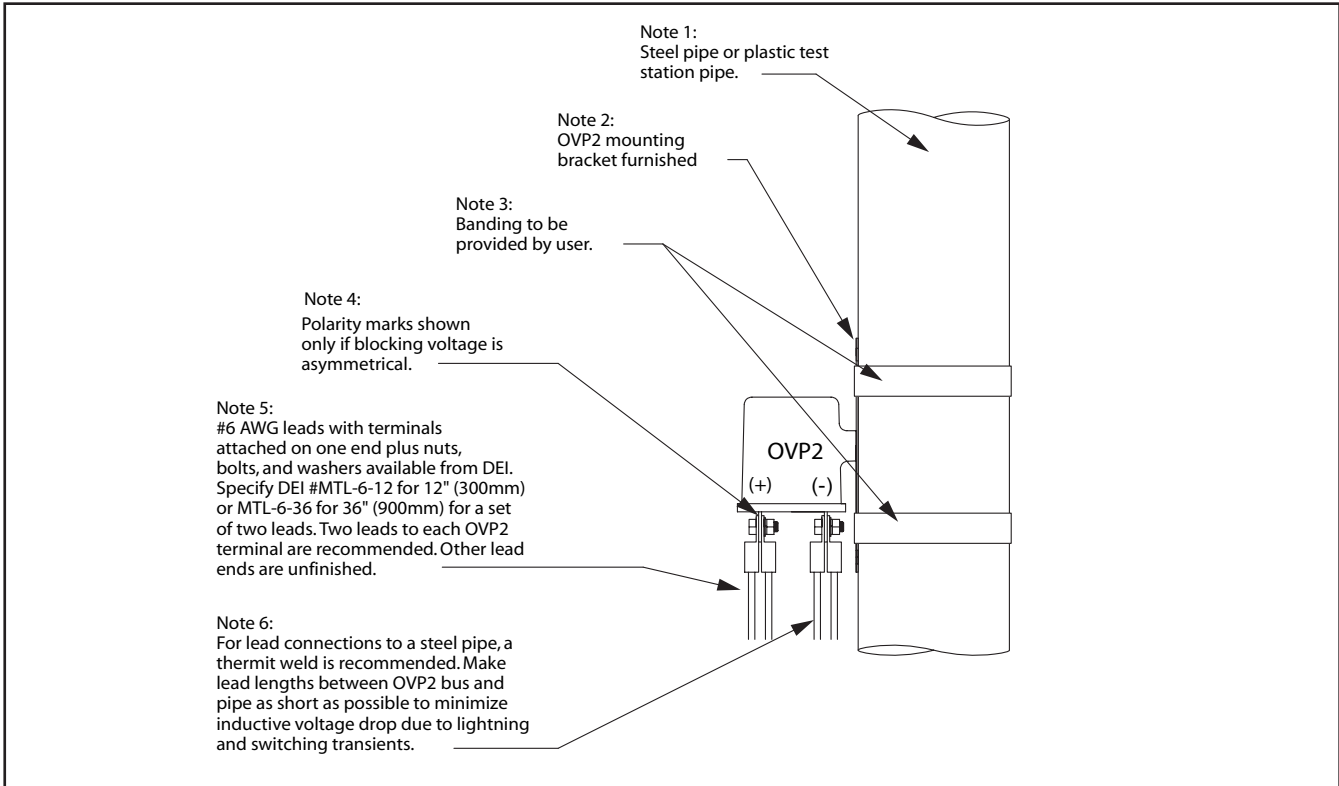


Figure 3 Pin Brazed Stud Connection to a Pipe Wall

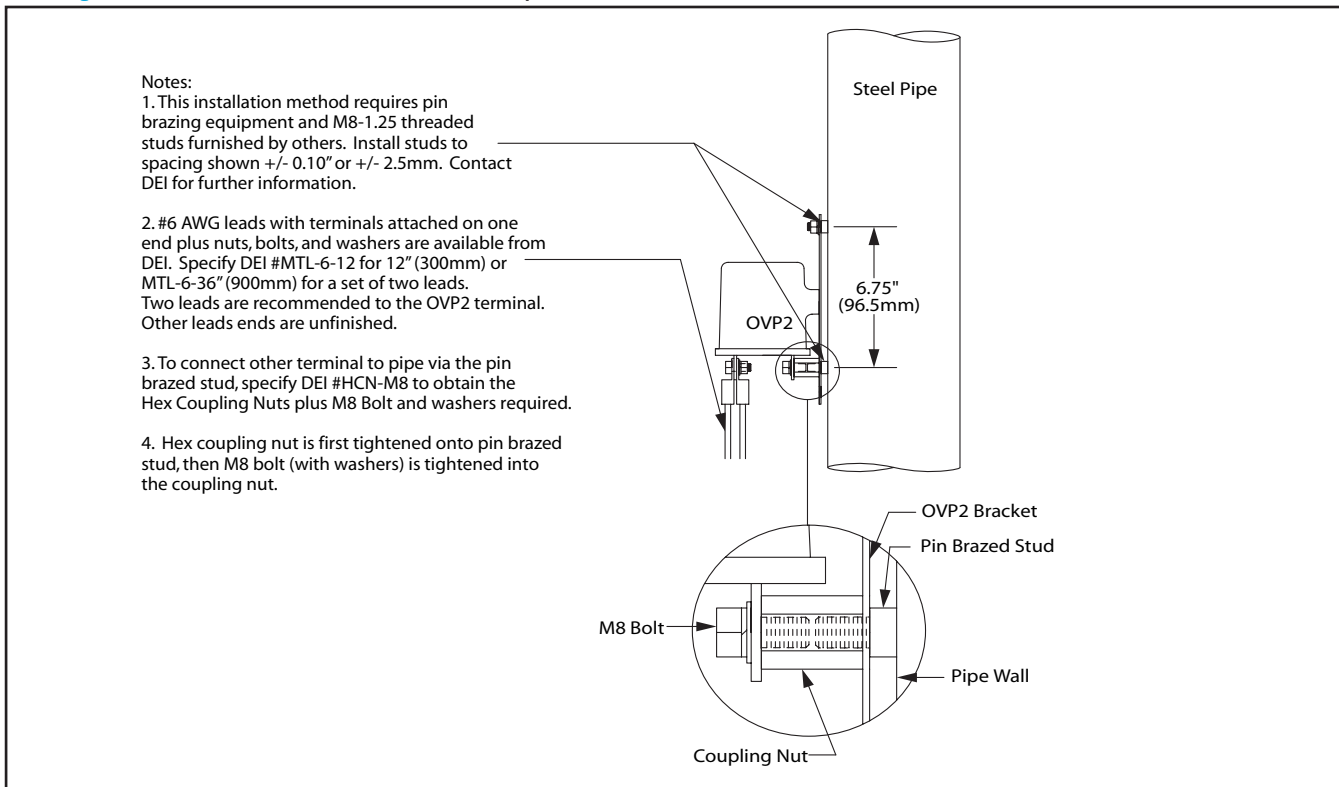


Figure 4 Flange Mount Using Tapped Holes or Pin Brazed Studs

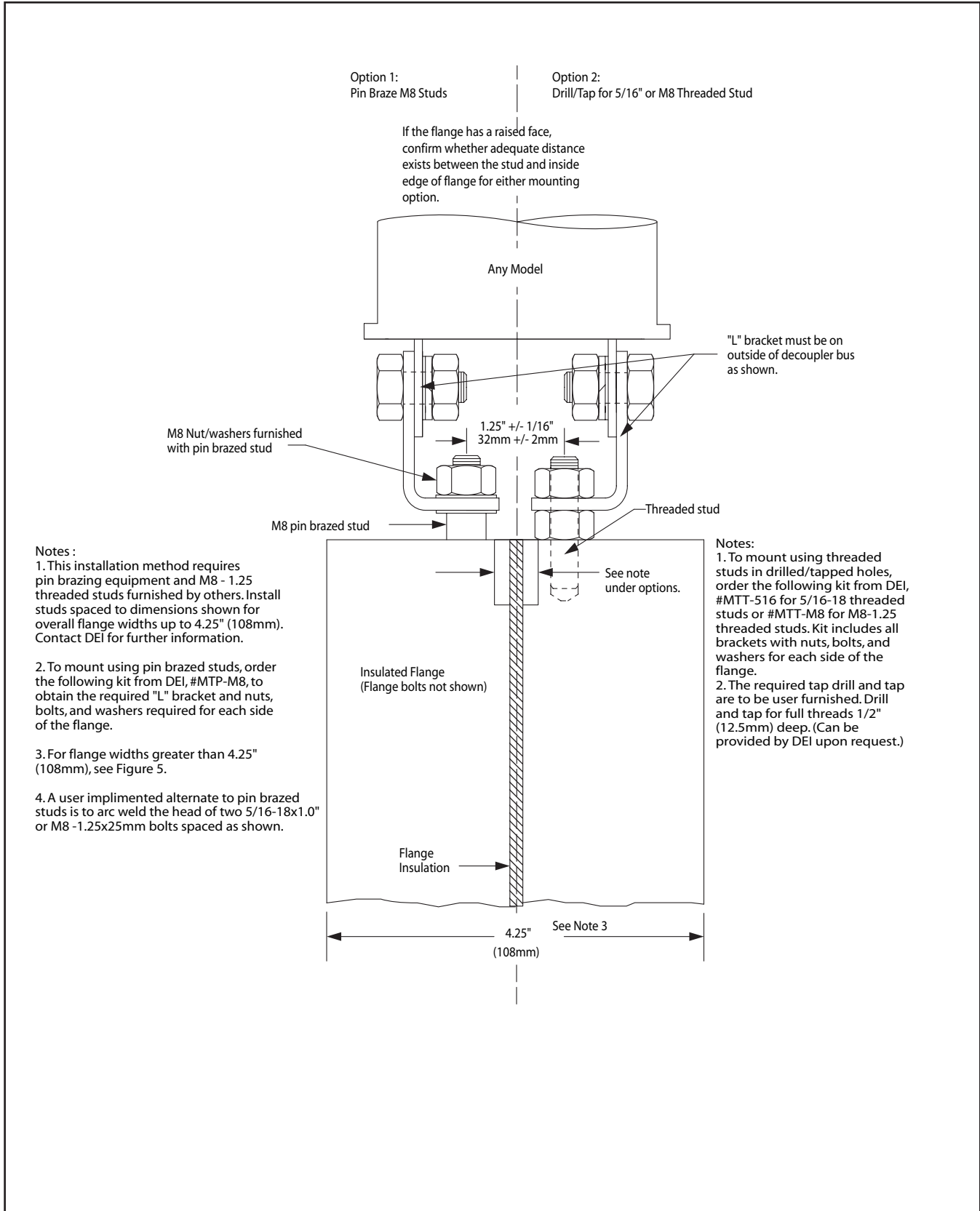


Figure 5 Flange Mount Using Tapped Holes or Pin Brazed Studs

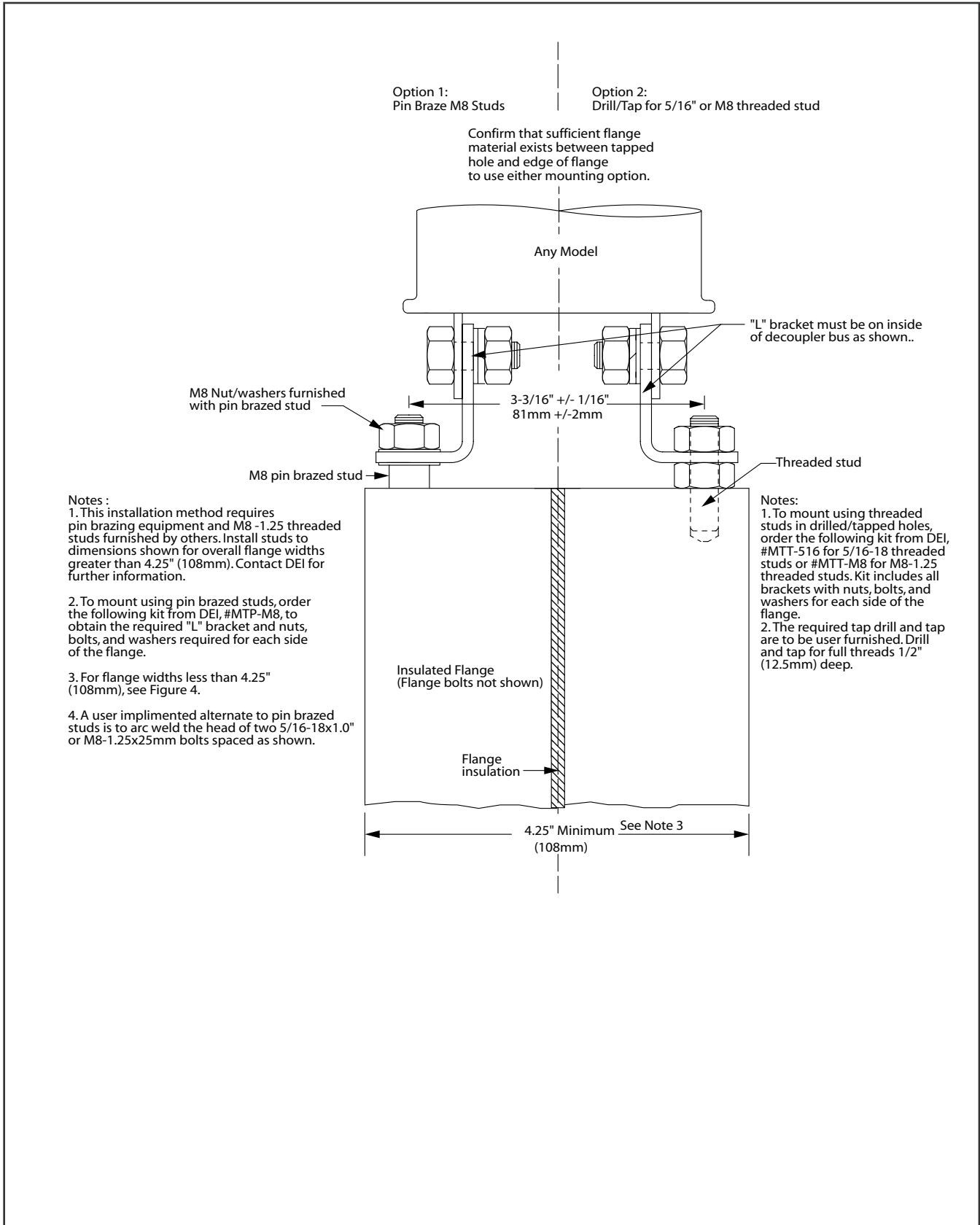
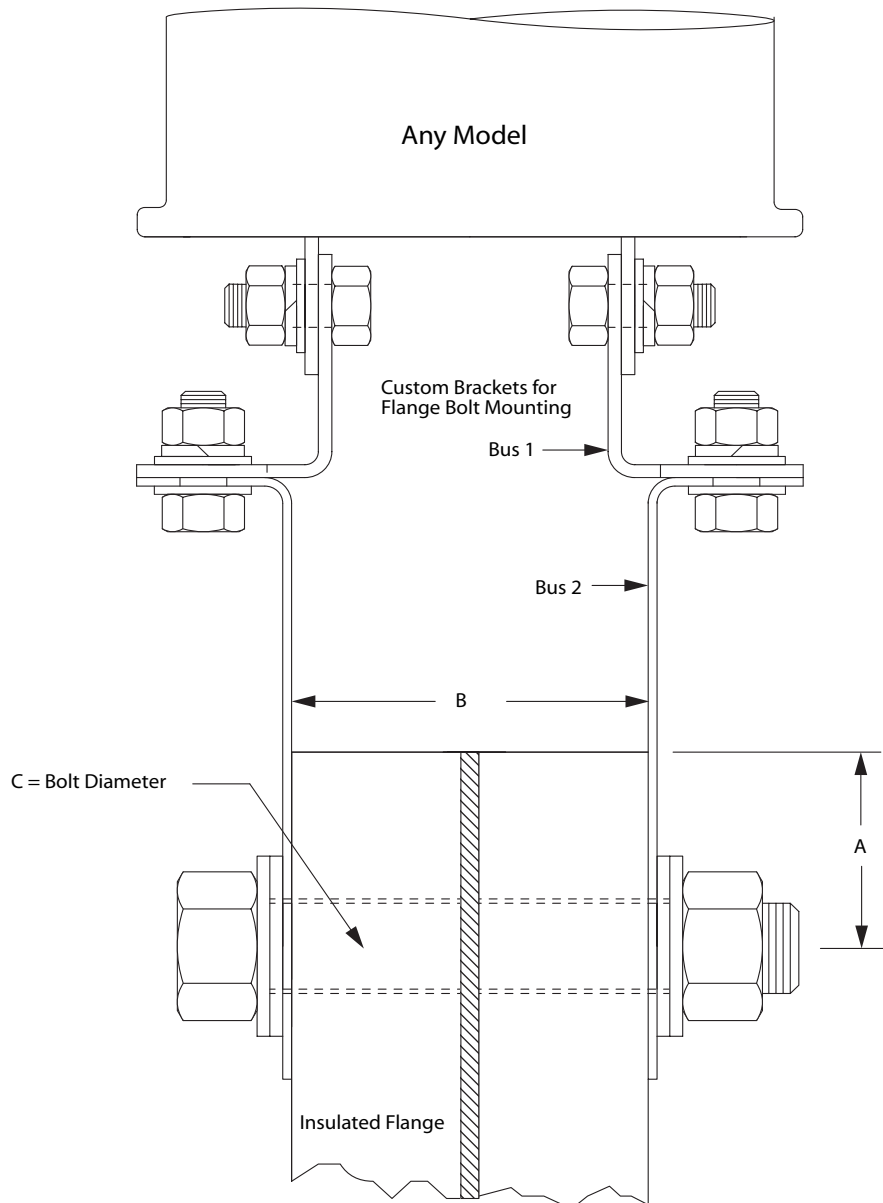


Figure 6 Flange Mount Using Existing Flange Bolts



- Notes:
1. For complete kit to flange mount using flange bolts, specify MTF-A-B-C and provide values (and units) for A, B, and C as shown above.
 2. Provide pipe diameter and ANSI LB. Class.
 3. Hole in bracket for flange bolt will be 1/8" (3.18mm) larger than the C dimension provided (to allow for the insulating sleeve) unless other hole size is specified with the order.
 4. Orientation and dimensions of Bus1 and Bus 2 may vary depending on flange dimensions provided. Assembly instructions will be provided with each mounting kit.
 5. Due to the numerous combinations of A, B, and C, parts for a specific flange may not be in stock.